



# Novel approach for the prediction of heart disease using application of ARIMA model

Dr. Shamsher Singh

SRPAAB College, Pathankot

---

## Abstract:

*In this paper, Information Mining is introduced and also tremendous Information in the arrangement of Medical care. Besides, the Information digging for gathered Information is investigated. Especially, their intricacies of the various locales medical services and restorative exploration. Informational index utilized for medical care expectation can contain missing worth which is dissects at first by the utilization of help vector machine(SVM). Proposed writing utilizes ARIMA model converge with KNN and Euclidean distance to foresee most plausible worth which can be supplanted with missing worth present with in the Dataset Finally, AI estimations have been used to analyze the exactness and perform expectation in like manner.*

**Keywords:** *Data mining, SVM, ARIMA, Euclidean distance*

---

## INTRODUCTION

Information Mining has in no time developed with the presence of the miracle Huge Data[1]. Without a doubt, various affiliations have started to digitize their records, and have changed their paper-based structures to electronic frameworks[2]. This change passes a couple of benefits on to the relationship, among them time reserves, a prevalent organization and an all the more firmly checking making the tasks less requesting. One of the quick consequences of this change is the visit social affair of critical Information. While the Information's holders began to worry about the limit of Information, they comprehended the advantages they can take from it. The Information accumulated can be considered as another unformatted of design (Crude Information) which should be sifted [3]. Taking care of Information give a prevalent quality Information which contribute in solicitation to pursue decision in information selection[4]. Additionally, Medical services components moreover pick electronic systems, by using various methodologies, among them, Electronic wellbeing Record (EHR) or Electronic Clinical Records (EMR) frameworks[5]. It infers the executing EHR systems, prompts a massive proportion of Information assembled by specialist's offices, focuses and other medical services suppliers[6]. By then, by far most of these Datasets are definitely not incredibly particularly coordinated and fitting for informative purposes[7]. In development, medical care Information are by and large very bewildering and challenging to research. For example the US Medical services structure alone at this point accomplished 150 Exabyte (1 Exabyte = 8388608 Terabit) five years prior[8]. This example is a direct result of the way that multi scale Information made from individuals is reliably extending, particularly with the new high-throughput sequencing stages, ceaseless imaging, and reason for care contraptions, likewise as wearable figuring and flexible medical services innovations[4]. As required, Information Mining has gotten a lot of thought by virtue of its strong limit of isolating Information from Information, moreover, wraps up discernibly pervasive in Medical services field by dint of its useful symptomatic technique for perceiving dark and critical Information in medical services Data[1], [9].

In medical care industry, Information Mining gives a couple of benefits for instance, disclosure of the blackmail in clinical service, openness of helpful response for the patients at lower cost, revelation of explanations behind illnesses and conspicuous evidence of restorative therapy strategies. [10]It moreover helps the Medical care investigators for making useful Medical services draws near, creating medicine idea structures, making medical care profiles of individuals thus on[1], [4], [11], [12]. Taking such a case, McKinsey measures that huge Information assessment can enable in excess of 300 billion in speculation assets for each year in U.S [13]. Therapeutic administrations, 66% of that through diminishes of around 8% in public Medical services utilization. Clinical tasks and R and D (imaginative work) are two of the greatest reaches for potential save assets with 165 billion besides, 108 billion in squander exclusively The consequence of Information Mining progressions are to give benefits to Medical services relationship for get-together the patients having similar kind of contaminations or clinical issues so Therapeutic administrations affiliation gives them effective medications[12]. It can similarly significant for expecting the length of stay of patients in recuperating focus, for supportive end and making plan for convincing Information structure administration[14]. Late developments are used as a piece of supportive field to work on the helpful organizations in pragmatic



way[15]. Information Mining techniques are moreover used to look at the changed components that are responsible for infections for example kind of sustenance, different working condition, guidance level, day to day environments, availability of pure water, human administrations organizations, social, regular and provincial variables[16].

In this paper, we present the potential gains of Information Digging for medical services and the reasons make Information Mining basic to be viewed as in medical care Information assessment. Information mining medical services Dataset with missing qualities is viewed as broke down at first through Help vector machine and exactness is dissected and after that ARIMA with KNN and Euclidean distance is utilized for amendment and investigation purpose[8], [12], [17][5][18]. Exactness is seen in both the cases to demonstrate worth of the review.

## STUDY OF EXISTING LITERATURE

Information mining approaches is the foundation of this writing. Investigation of existing writing give base to proposed writing. [7] Explored different models and strategies utilized inside information mining. Information mining methods improvement from 2005 to 2015 is surveyed and application concerning medical services is proposed. [1] Proposes the joining of clinical information with information mining techniques used to shape clinical data framework. Patient ailment can be examined alongside future expectation about understanding's wellbeing. Secret prospects can be separated utilizing limitless information mining procedures to make exact wellbeing conjecture. [19] Proposed multi-facet perceptron to investigate huge information comparing to medical care. As writing manages medical care of patients consequently serious level of exactness is wanted. To achieve the ideal objective correlation of SVM and multi-facet perceptron on medical care informational collection is made. Aftereffects of SVM as far as characterization are better when contrasted with multi-facet perceptron. [6] Proposes information digging strategies utilized for investigation of diabetics. Support Vector Machine (SVM) is utilized for this reason. Hereditary methodology is additionally broke down for diabetic's dataset in the field of information mining. Aftereffects of SVM are gotten to be better. [20] Proposes five J.48 classifiers to foresee hypertension and eight different sicknesses. Expectation precision is gotten and thought about against gullible bayes approach. Brings about terms of J.48 are acquired to be better. [17] Recommends half breed approach for medical care to anticipate illnesses utilizing Huge information. Pruning based KNN is utilized for this reason which utilized thickness based grouping based technique incorporated with KNN approach. Neighborhood exception component of PB-KNN is better when contrasted with KNN. [21] proposes SVM and brain network procedures for skin sore recognition in human body. Division alongside characterization is acted to distinguish the sicknesses. [8]predict heart sicknesses are essential driver of death among people in last ten years. Information mining strategies are utilized to proficiently identify and anticipate heart sicknesses. [9] proposes a system through which data about quiet coming for exam at clinic is put away and calculation is applied to perform expectations. Information mining calculation considered in this approach is gullible bayes. Exactness of expectation is acquired is critical in this case.[22] proposes shrewd coronary illness forecast framework. Choice tree , credulous bayes and brain network procedure are utilized for exact examination and expectation of illness.

Examined approaches upgrade execution considering datasets excluding any uproarious or missing qualities. Missing qualities or uproarious information dealing with and expanding forecast precision is essential undertaking of proposed approach.

## PROPOSED WORK

The progression of proposed approach is recorded as under

- Gotten dataset or create it from online source (Online Irregular Number generator) with missing qualities for examination reason
- Perform pre-handling by switching trait values over completely to ostensible qualities for activity.
- Select classifier as SMO for help vector machine.
- Investigate precision of grouping.
- Perform Auto relapse and select most plausible worth that can be supplanted with missing worth. Apply missing worth evacuation system utilizing KNN and Euclidean distance instrument.
- Perform exactness check again to demonstrate worth of the review.
- Nitty gritty depiction of proposed work is portrayed in this segment.

## Dataset Portrayal

The dataset utilized contain 13 credits Age, Orientation, Chest torment, Resting circulatory strain, Serum Cholesterol in mg/dl, Fasting blood suger, Resting electrocardiographic outcome, Most extreme pulse accomplished, Exercise actuated angina, Old pinnacle, ST\_amount of activity, Vessels, Thal.



Age	Gender	Chest Pain Type	Resting blood Pressure	Serum Cholesterol in mg/dl	Fasting blood suger	Maximum heart rate achieved	Exercise induced angina	Old peak	ST_amount of exercise	Vessels	Thal
21	0	2	102	122	0	0	0	1.2	1	2	2
22	1	?	103	123	1	1	1	?	2	3	7
23	0	4	104	155	0	2	0	1.4	3	4	4
24	1	5	105	145	?	0	0	1.5	1	2	5
25	0	2	106	146	1	1	1	1.6	2	?	6
---	---	---	---	---	---	---	---	---	---	---	---

**Table 1:-Showing dataset of heart disease used in the proposed system**

This dataset contain missing qualities which are to be taken care of through the proposed writing.

### PROPOSED AGLORITHM

The calculation for the proposed approach is as under

Calculation ARIMA(KNN+EUCLIDEAN)

\* INPUT: Dataset with quality qualities including ancient rarity or boisterous or missing qualities.

\* Yield: Forecast Exactness

a) Perform Pre-Handling

Convert quality qualities to ostensible structure for investigation.

b) Select classifier SMO(Support vector machine)

c) Get exactness and record it for examination

d) Apply auto relapse component for computing most plausible qualities from each ascribes

e) Indicate worth of K proposing neighbor distance and Euclidean distance to decide values from dataset to be supplanted

f) Supplanted missing qualities determined from KNN+EUCLIDEAN with most likely qualities.

g) Work out precision and contrast it and SMO.

**Proposed flowchart**

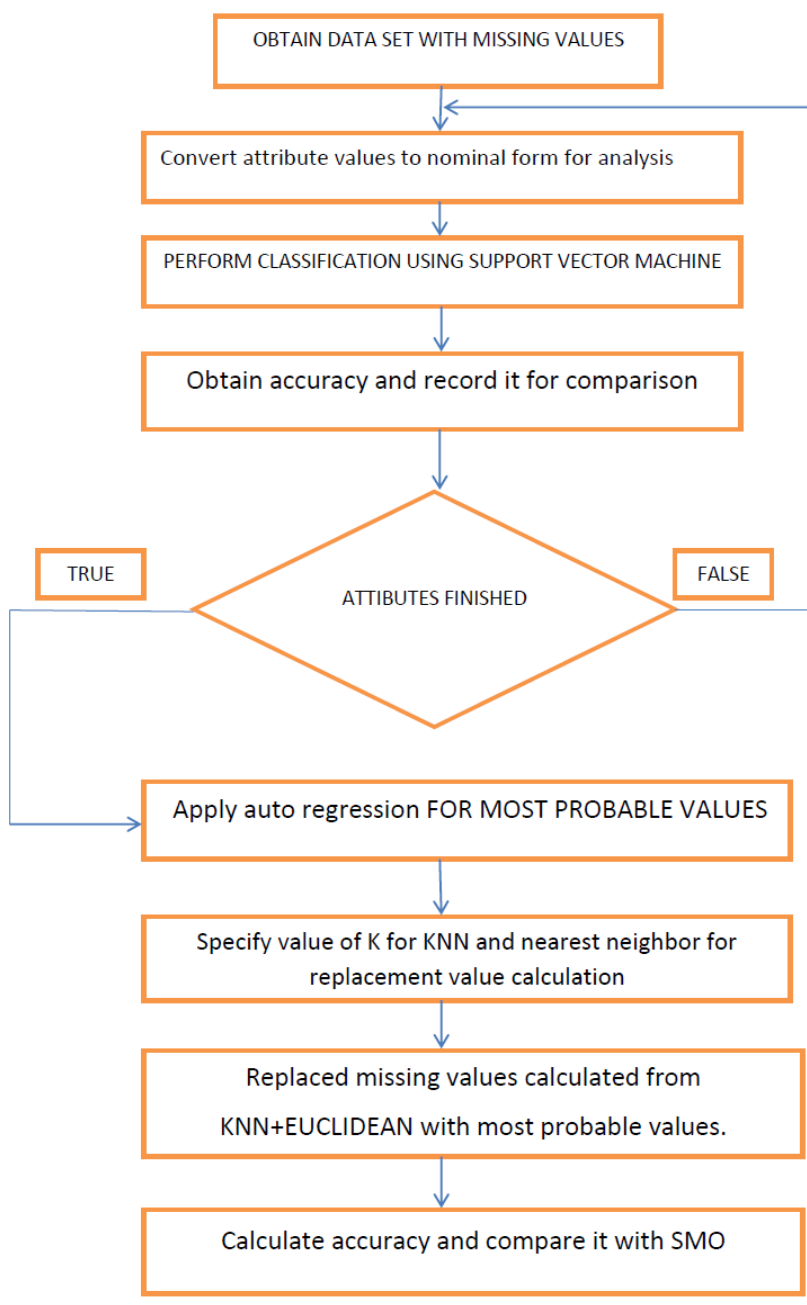


Figure 1:-Showing Proposed Flowchart

**RESULTS AND PERFORMANCE ANALYSIS**

Results are acquired regarding precision and future expectation. On the off chance that missing worth are available the help vector machine cannot handle this issue. To defeat this issue, missing worth are handled utilizing KNN and Euclidean distance.

NO_OF_TUPLES_ANALYSED	SMO	MODIFIED_ARIMA
301	86.5	94.3
291	83.365	93.12
251	76.235	86.212
151	66.555	71.646
101	49.999	54.457

Table 1:-Accuracy of classification of existing and proposed approach

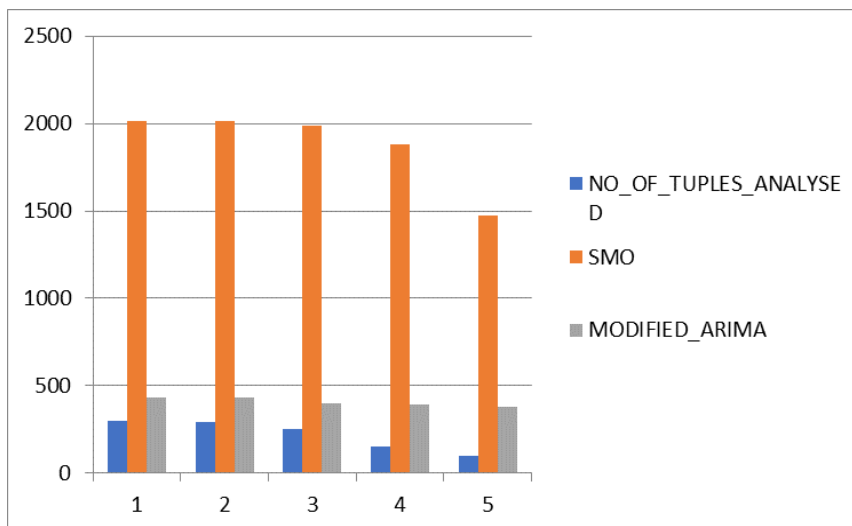


Figure 1:- Accuracy of classification of existing and proposed approach

The time consumed of existing methodology is additionally higher as contrast with proposed approach. This is otherwise called dormancy or deferral.

NO_OF_TUPLES_ANALYSED	SMO	MODIFIED_ARIMA
30	2014	445
291	2012	442
251	1991	408
151	1881	395
101	1474	390

Table 2:-Showing latency of Support vector machine classifier with modified arima

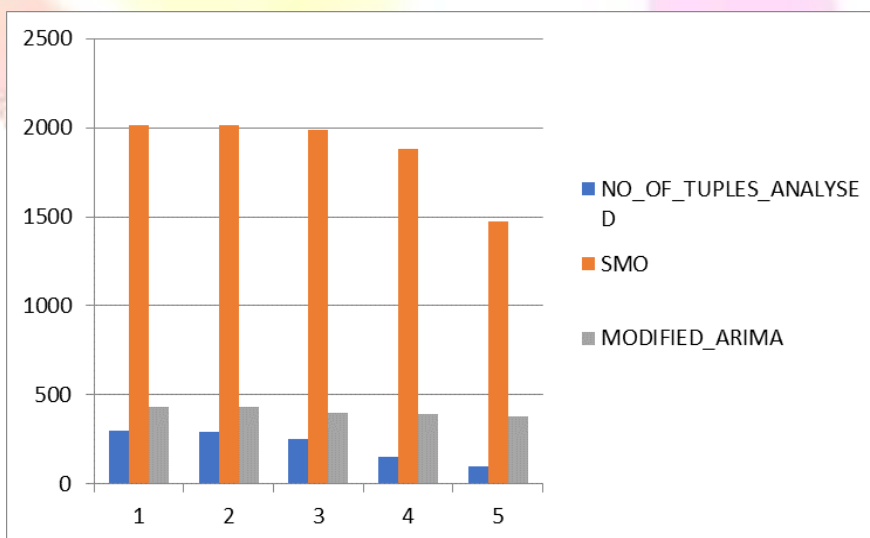


Figure 2:- -Showing latency of Support vector machine classifier with modified arima

The expectation produced through the proposed approach will help the individual in anticipated heart illnesses and go to forestalling lengths.

### CONCLUSION AND FUTURE SCOPE

The missing qualities taking care of is a basic part which is achieved with the changed ARIMA model. The SVM is solo classifier generally utilized for mathematical worth. The missing worth are for the most part string in nature which can not be



characterized with SVM. Consequently, exactness corrupts. To beat this issue adjusted ARIMA with KNN Euclidean distance is utilized. The outcome shows improvement concerning exactness, expectation, and inactivity.

In future KNN and manhattan distance can be joined or hybridized to further develop forecast exactness.

## REFERENCES

1. I. Țăranu, "Data mining in healthcare: decision making and precision," *Database Systems Journal*, vol. 5, no. 4, pp. 33–40, 2015.
2. R. D. Q. D. Lqglu *et al.*, "A Review of Data Mining and Solar Power Prediction," vol. 0, pp. 3–7, 2016.
3. A. Mukhlas and A. Ahmad, "Data Mining Technique : Towards Supporting Local Co-operative Society in Customer Profiling , Market Analysis and Prototype Construction," no. May, pp. 109–114, 2016.
4. M. E. Student, C. T. Nadu, and C. T. Nadu, "Heart disease classification and its co-morbid condition detection using WPCA genetic algorithm," pp. 287–291, 2016.
5. W. E. Leland, W. E. Leland, D. V. Wilson, and D. V. Wilson, "On the Self-Similar Nature of Ethernet Traffic," *Computer Communication Review*, vol. 2, no. August 1989, pp. 203–213, 1992, doi: 10.1145/167954.166255.
6. "1-s2.0-S2001037016300733-main(1).pdf."
7. N. Jothi, N. A. Rashid, and W. Husain, "Data Mining in Healthcare - A Review," *Procedia Computer Science*, vol. 72, pp. 306–313, 2015, doi: 10.1016/j.procs.2015.12.145.
8. S. Sivagowry, M. Durairaj, and a. Persia, "An empirical study on applying data mining techniques for the analysis and prediction of heart disease," *2013 International Conference on Information Communication and Embedded Systems (ICICES)*, pp. 265–270, 2013, doi: 10.1109/ICICES.2013.6508204.
9. C. Anusha, S. K. Vinay, H. J. Pooja Raj, and S. Ranganatha, "Medical data mining and analysis for heart disease dataset using classification techniques," *National Conference on Challenges in Research & Technology in the Coming Decades (CRT 2013)*, pp. 1.09-1.09, 2013, doi: 10.1049/cp.2013.2485.
10. S. D. Thepade, S. Vasaiakar, N. Bhavsar, R. More, and A. Bhatkhande, "VEHICLE TRAFFIC DENSITY ESTIMATION USING BAYES , RULE , TREE FAMILY DATA MINING CLASSIFIERS APPLIED ON BACKGROUND SUBTRACTED TRAFFIC IMAGES," pp. 87–92, 2016.
11. E. Pinheiro, W. Weber, and L. Barroso, "Failure trends in a large disk drive population," *Proceedings of the 5th USENIX Conference on File and Storage Technologies (FAST 2007)*, no. February, pp. 17–29, 2007, doi: 10.1016/j.engfailanal.2005.10.010.
12. A. Sharma and V. Mansotra, "Emerging applications of data mining for healthcare management - A critical review," *2014 International Conference on Computing for Sustainable Global Development (INDIACom)*, pp. 377–382, 2014, doi: 10.1109/IndiaCom.2014.6828163.
13. A. Adamov, "Data Analytics and Web Insights in area of Data Mining and Analytics".
14. N. R. Kasat and S. D. Thepade, "Novel Content Based Image Classification Method Using LBG Vector Quantization Method with Bayes and Lazy Family Data Mining Classifiers," *Procedia Computer Science*, vol. 79, pp. 483–489, 2016, doi: 10.1016/j.procs.2016.03.062.
15. A. A. R. Mining, "Mining of Market-Basket Data using MapReduce on YARN Framework," 2016.
16. K. Yan, X. You, X. Ji, G. Yin, and F. Yang, "A Hybrid Outlier Detection Method for Health Care Big Data," *2016 IEEE International Conferences on Big Data and Cloud Computing (BDCloud), Social Computing and Networking (SocialCom), Sustainable Computing and Communications (SustainCom) (BDCloud-SocialCom-SustainCom)*, pp. 157–162, 2016, doi: 10.1109/BDCloud-SocialCom-SustainCom.2016.34.
17. S. Jain and N. Pise, "Computer aided Melanoma skin cancer detection using Image Processing," *Procedia - Procedia Computer Science*, vol. 48, no. Iccc, pp. 735–740, 2015, doi: 10.1016/j.procs.2015.04.209.
18. P. Naraei, V. Street, V. Street, and V. Street, "Application of Multilayer Perceptron Neural Networks and Support Vector Machines in Classification of Healthcare Data," no. December, pp. 848–852, 2016, doi: 10.1109/FTC.2016.7821702.
19. F. Huang, S. Wang, and C. Chan, "Predicting Disease By Using Data Mining Based on Healthcare Information System," *2012 IEEE International Conference on Granular Computing Predicting*, pp. 12–15, 2012, doi: 10.1109/GrC.2012.6468691.
20. M. A. Farooq, M. A. M. Azhar, and R. H. Raza, "Automatic Lesion Detection System (ALDS) for Skin Cancer Classification Using SVM and Neural Classifiers," *2016 IEEE 16th International Conference on Bioinformatics and Bioengineering (BIBE)*, pp. 301–308, 2016, doi: 10.1109/BIBE.2016.53.
21. S. Palaniappan and R. Awang, "Intelligent heart disease prediction system using data mining techniques," *2008 IEEE/ACS International Conference on Computer Systems and Applications*, pp. 108–115, 2008, doi: 10.1109/AICCSA.2008.4493524.